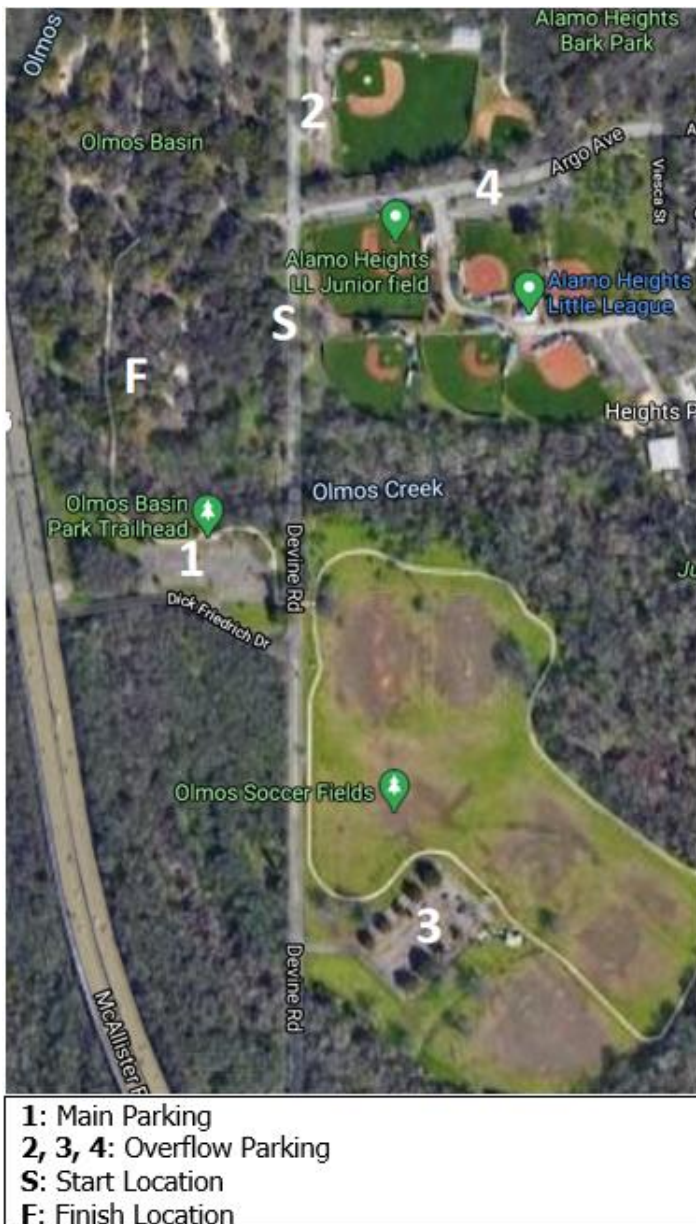


San Antonio City and Interscholastic Championships Saturday, April 10th, 2021

[Register Online](#)

[Complete your Annual Waiver of Liability via Registration](#)

Join LSOC at Olmos Basin and Park on Saturday, April 10th, for the San Antonio City and Interscholastic Orienteering Championships. We will be at the Olmos Basin Clubhouse area West from the Alamo Heights HS baseball field. Several parking areas are available (see map below).



To maintain all participants' and volunteers' health and safety during the COVID-19 pandemic, LSOC has implemented special rules for event participants. Please review and follow the LSOC Pandemic

guidelines. **Same-day registration is not allowed.** Registration is now open for pre-payment online. Participants must sign the waiver, which is found during the registration process online.

All courses require an E-Punch finger stick. E- Punch finger sticks are available for rental (\$3). Due to COVID-19 considerations water and compasses will **NOT** be provided. Participants must bring their own compass and water.

Courses (estimated controls and distances)

Course	Description	Controls	Distance
White	Beginner Novice course	About 13	About 2km
Yellow	Novice course	About 12	About 3 km
Orange	Intermediate course	About 13	About 4 km
Green	Advanced course	About 18	About 5 km

Fees

Registration fees are shown below. One map per registration fee.

Regular Registration	
Age Group	Entry Cost
20 and younger	\$ 20.00
19 and over	\$ 30.00

Schedule

Participants will select their start time when completing registration online. All participants will be expected to begin the course promptly at their chosen start time. The first start is at 10:00 am, the last start is at 12:00 pm, with a 2-hour time limit for all courses. All runners must be off all courses by 2:00 pm.

To comply with city and state limits on the number of people at the park simultaneously, please arrive at the parking area no earlier than 30 minutes before your start time and leave the parking area within 30 minutes of finishing your course. Arrive at the start area no earlier than 6 minutes before your start time to facilitate social distancing. If available, an empty time slot will be allocated to you if your start time is missed.

Directions

South on US 281, exit Jones Maltsberger, turn left on Jones Maltsberger (signs for Basse Road) , go .4 miles and turn right on Basse Road, go .4 miles and turn left on Jones Maltsberger, Go .9 miles (Jones Maltsberger changes to Devine Road for 420 feet) , turn right on Dick Friedrich Drive, turn right into the parking lot. Park and follow the signs to the start area. The parking lot address is 115 Dick Friedrich Drive, San Antonio, TX 78212.

North on US 281, exit Hildebrand Avenue, turn left on Hildebrand Avenue, go .4 miles and turn right on Devine Road, Go .9 miles and turn left on Dick Friedrich Drive, turn right into the parking lot. Park and follow the signs to the start area. The parking lot address is 115 Dick Friedrich Drive, San Antonio, TX 78212.

Team Scoring Rules

A link will be published to describe the rules shortly.

Weather

For current forecast click [here](#).

Meet Director

Clai Gardner 210-315-4057
claicior@hotmail.com